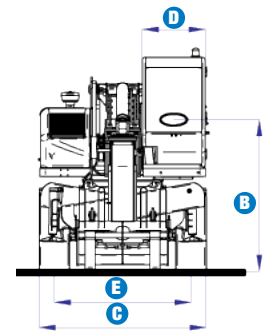
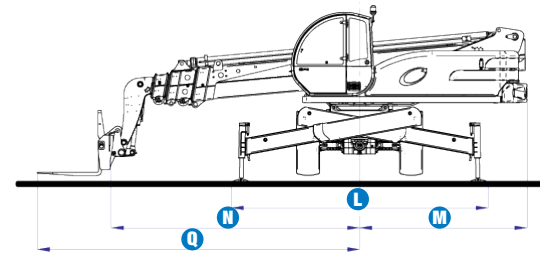
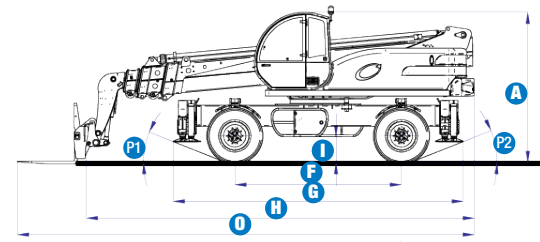


## Specifications

MODEL		GTH™-6025R	
MEASUREMENTS	Metric	Imperial	
Lifting height maximum	24.84 m	81 ft 6 in	
Lifting capacity maximum	6,000 kg	13,226 lbs	
Lift capacity at maximum height	2,000 kg	4,409 lbs	
Lift capacity at maximum reach	250 kg	551 lbs	
Forward reach maximum	20.85 m	68 ft 4 in	
Reach at maximum height	3.65 m	11 ft 11 in	
<b>A</b> Height	3.15 m	10 ft 4 in	
<b>B</b> Height at steering wheel	2.23 m	7 ft 3 in	
<b>C</b> Width	2.47 m	8 ft 1 in	
<b>D</b> Inside cab width	78 cm	2 ft 7 in	
<b>E</b> Track	2.02 m	6 ft 7 in	
<b>F</b> Wheelbase	3.50 m	11 ft 5 in	
<b>G</b> Length at stabilisers	6.09 m	19 ft 11 in	
<b>H</b> Length at fork-holder plate	8.40 m	27 ft 6 in	
<b>I</b> Ground clearance	54 cm	1 ft 9 in	
<b>L</b> Overall width, stabilisers extended	5.04 m	16 ft 6 in	
<b>M</b> Side rear overhang	3.28 m	10 ft 9 in	
<b>N</b> Side front overhang	5.12 m	16 ft 9 in	
<b>O</b> Overall length	9.60 m	31 ft 6 in	
<b>Q</b> Overall front overhang	6.31 m	20 ft 8 in	
<b>P1</b> Obstruction angle	21.5°	21.5°	
<b>P2</b> Departure angle	21.5°	21.5°	

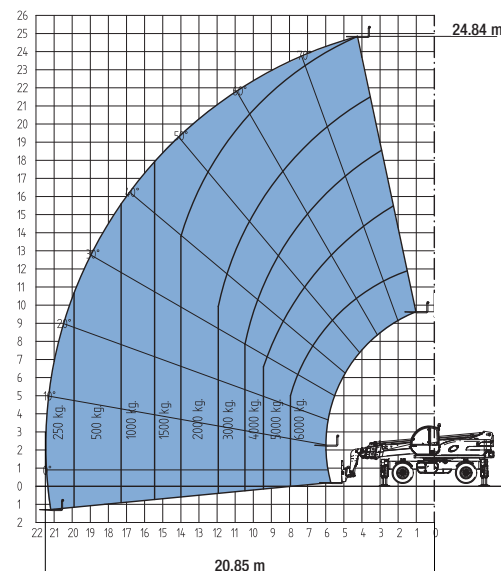


PRODUCTIVITY		
Lifting/lowering time	26 sec./20 sec.	26 sec./20 sec.
Extension/retraction time	37 sec./25 sec.	37 sec./25 sec.
Inside/outside turning radius	2.75 m/4.85 m	9 ft /15 ft 11 in
Break out force (with 800L shovel SAE J 732)	8,400 kg	18,517 lbs
Towing capacity at dynamometer	11,500 kg	25,350 lbs
Travel speed (maximum)	30 km/h	18.6 mph
Fork-holder plate rotation	130°	130°
Chassis levelling on both axles	+/- 7.5°	+/- 7.5°
Floating forks	L 1200 mm Section 150 x 60 mm	L 3 ft 11 in Section 6 in x 2 in
Tyres (DIN 70361)	445/65 R 22,5"AR-01-TL	

POWER		
Engine	Cummins Turbo Diesel 123 kW (165 HP)	
Tank capacities		
Fuel	145 L	38 gal
Engine oil	18 L	5 gal
Hydraulic oil	230 L	61 gal
Hydraulic output/pressure	135 L / min - 270 bars	30 gal / min - 3,916 psi

WEIGHT		
Weight*	20,500 kg	45,190 lbs

STANDARDS COMPLIANCE	Operating cab conforms to ISO3471 (ROPS) and ISO3449 (FOPS) Low emission engine conforms to UE 97/68 directives
----------------------	--



Lift capacity chart (with stabilisers)

EN1459, Annex B

\* Weight will vary depending on options and/or country standards

## Features

### STANDARD FEATURES

#### MEASUREMENTS

- 6,000 kg (13,226 lb) maximum lift capacity
- 24.84 m (81 ft 6 in) maximum lift height
- 20.85 m (68 ft 4 in) maximum forward reach

#### PRODUCTIVITY

- 4 x 4
- 4 - wheel drive
- 3 steering modes:
  - front wheel steer
  - crab steer
  - coordinated steer
- Power assisted steering
- Front and rear stabilisers
- Continuous rotation
- Two-speed mechanical gearbox 'shift on fly'
- Hydrostatic transmission
- Limited slip differential on rear axle
- 445/65R 22,5" AR-01-TL tyres
- 2 Multifunction electro-proportional joysticks
- Hydraulic quick coupling for attachments
- Hydraulic line on boom
- Floating forks
- Adjustable suspended seat
- Large diameter steering wheel
- Front windscreen wipers
- Front & rear lights
- Oil immersed, multi-disc, self-adjusting brakes on both axles
- Lockable fuel tank
- Longitudinal stability control system with load monitor
- Visible display with coloured LEDs
- Audible alarm
- Automatic lock-out of boom extension and lowering
- Chassis levelling on both axles +/- 7.5°
- Control enable switch

#### POWER

- Cummins Turbo Diesel 123 kW (165 HP)

### OPTIONS & ACCESSORIES

#### PRODUCTIVITY

- Air conditioning
- Second hydraulic line on boom
- Windshield protection grid
- Wiper on cab roof
- Adjustable spotlight
- Adjustable spotlight on boom
- Spare wheel
- Foam-filled tyres
- Water muffler
- Complete radio remote control with only one joystick
- High proportional valve block
- 20 ton hydraulic jack and 30 mm wheel nut box wrench

#### ATTACHMENT OPTIONS

- Loading shovel 500 L
- Concrete bucket 500/800 L manual/hydraulic discharge
- Concrete mixing bucket 500 L with remote control
- Brick-holder basket
- Fork side shift +/- 100 mm
- FEM 3 plate and forks kit
- Fixed hook on plate
- 4 m jib, 900 kg capacity
- 4 m jib with 900 kg capacity hydraulic winch
- Hydraulic winch 3000/5000 kg
- Fixed and rotating man-platforms up to 5.5 m
- Centering holder boom (tunneling application)

#### UK

The Maltings  
Wharf Road  
Grantham NG31 6BH  
UK  
Tel: +44 (0)1476 584333  
Fax: +44 (0)1476 584334

#### France

10, ZA de la Croix St. Mathieu  
28320 Gallardon  
France  
Tel: +33 (0)2 37 26 09 99  
Fax: +33 (0)2 37 26 09 98

#### Germany

Finienweg 3  
28832 Achim/Bremen  
Germany  
Tel: +49 (0)4202 8852-0  
Fax: +49 (0)4202 8852-25

#### Spain

Gaià 31, Pol. Ind. Plà d'en Coll  
08110 Montcada i Reixac  
Barcelona  
Spain  
Tel: +34 93 572 50 90  
Fax: +34 93 572 50 91

#### Scandinavia

Tagenevägen 72  
425 37 Hisings Kärra  
Sweden  
Tel: +46 31 57 51 00  
Fax: +46 31 57 90 20

#### Middle East

Terex Equipment Middle East  
PO Box 282325  
Dubai, U.A.E.  
Tel: +971 4 339 1800  
Fax: +971 4 339 1802  
Email: infome@genieind.com

#### Genie United States

18340 NE 76th Street  
P.O. Box 97030  
Redmond, Washington 98073-9730  
USA  
Tel: +1 425 881-1800  
Fax: +1 425 883-3475

**Email:** infoeurope@genieind.com

**Distributed By:**