

**Compact**  
ROUGH TERRAIN



**High Reach**  
ROUGH TERRAIN



**Rotating**  
ROUGH TERRAIN



# MULTI-PURPOSE MACHINES

## WHEN YOU NEED A LIFT, YOU KNOW IT MUST BE A GENIE

Genie offers a large range of lifting equipment that offers performance, safety and reliability. As a subsidiary of TEREX Corporation, we offer our customers easy access to a complete range of other products and services across the construction, mining, utility and road building industries.

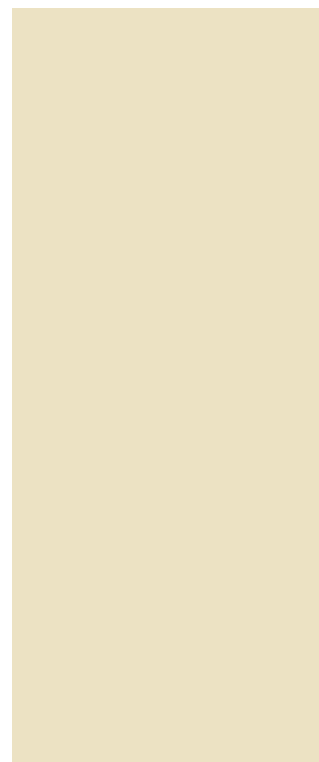
### Our team is always working for you.

The Genie Service Team provides support when you need it most, which means more "Up Time" for you, our customers. Genie customers also have access to an ever-increasing range of services, from financial funding through TEREX Financial Services (TFS) to a parts support network that ships most parts within 24 hours.



Genie telehandlers have a lifting capacity from 2.5 to 6 tons. These versatile machines provide working reach up to 24.8 m and horizontal reach between 3.44 m and 21.5 m.

**Genie**  
A TEREX COMPANY



# MULTIPLY YOUR RETURN ON INVESTMENT



Put Genie telehandlers on the job for increased flexibility and maximum productivity. Ideal for applications requiring the versatility to lift, move and place various types of material and loads. The Genie telehandlers offer increased functionality with a wide range of attachments giving you one machine for multiple tasks. The answer for both large and small construction jobs, masonry, farming and landscape applications.

Choose from our compact models for high productivity in confined or limited access area. Want more height, power and productivity? Go for our rough terrain fixed or rotating models.

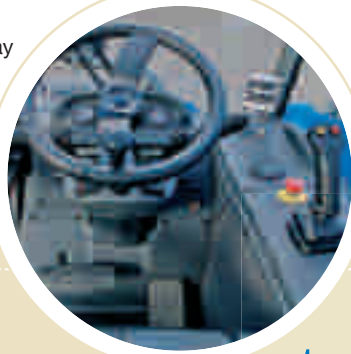
## CHOOSE FROM FOURTEEN POWER-PACKED MODELS

Opt for a compact rough terrain telehandler series when you need a nimble, yet powerful machine for high productivity in confined or limited access areas. Want more power and reach? Go with a heavy-duty, reliable workhorse from the high reach fixed or rotating rough terrain series.

# COMPACT ROUGH TERRAIN PRODUCTIVITY ENHANCING

## Easy to use

The easy-to-use, multi-function, smooth, proportional joystick provides fast and precise positioning for ease of operation and minimal operator effort with hand movement. The dashboard display allows an immediate visualisation of the parameters.



## High comfort

The innovative, ergonomic, spacious and comfortable cab design with tilt steering conforms to ISO3471 (ROPS) and ISO3449 (FOPS). The suspension seat is adjustable for additional comfort. Excellent visibility for the operator.

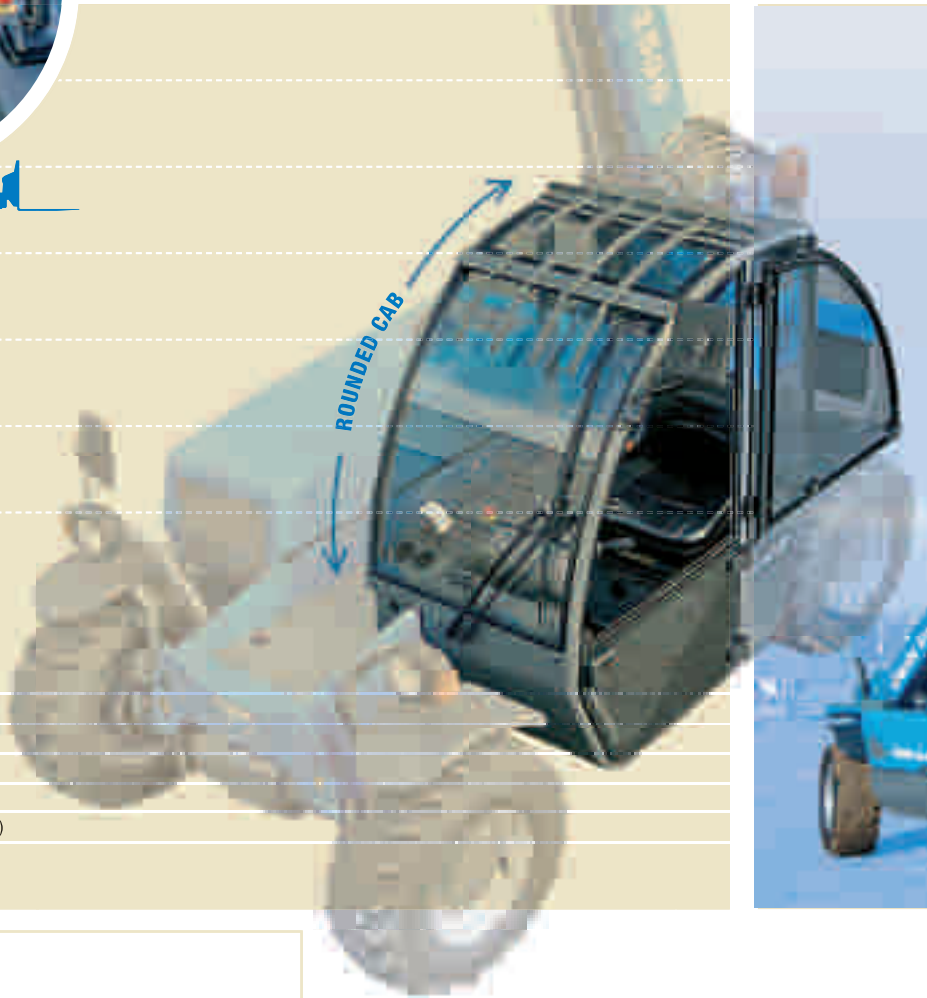
7.50 m  
6.00 m  
4.50 m  
3.0 m  
1.50 m



ROUNDED CAB

	<b>GTH-2506</b>	<b>GTH-3007</b>
LIFTING HEIGHT (MAX.)	5.75 m	6.85 m
LIFTING CAPACITY (MAX.)	2.5 t	3.0 t
CAPACITY AT MAX. HEIGHT	1.25 t	2.5 t
FORWARD REACH (MAX.)	3.34 m	3.80 m
DIMENSIONS (HxWxL)	1.92x1.80x3.72 m*	2.05x2x4.69 m*
ENGINE (LOW EMISSION)	Deutz 63 hp (47 kW)	Deutz T 81.5 hp (60 kW)
WEIGHT	4,450 kg	6,000 kg

\*Length at fork-holder plate



**Compact Competence**

Genie's compact, yet rugged, rough terrain models maximise mobility and manoeuvrability in tight access areas. With impressive lift capacities of up to 3 tons and the ability to lift loads up to 6.85 m, these rough terrain forklifts and skidloaders are widely popular on any work site.

**Powerful Flexibility**

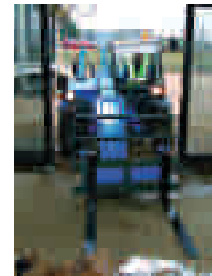
The infinitely variable hydrostatic transmission and 4x4 drive allows these machines to operate on all work sites. Four-wheel steer with three different steering modes, including front wheel, rear wheel or crab steer, provides a very tight turning radius for increased mobility and flexibility. Both models are equipped with power assisted steering. The multi-disk, oil immersed brakes are self-adjusting on the front axle for easy handling and smooth positioning.



**An investment in versatility**

Extreme versatility makes Genie telehandlers a valued and cost-effective investment for work sites. A perfect choice for almost any task that involves lifting, moving, digging or placing objects and loads exactly where you need them.

Select from a wide variety of attachments that expand work capabilities to match the exact job you need to tackle. The answer for both large and small construction jobs, masonry, farming and landscape applications.



**Compact dimensions and high capacities**

The GTH-2506 and the GTH-3007 are very compact machines with an impressive lift capacity. The cabs respectively measure 1.80 m to 2 m wide and 1.92 m to 2.05 m high. In addition, these models are extremely manoeuvrable and allow access in tight areas (industrial buildings, underground car parks, farming sheds). They can be easily transported on a standard lorry and will follow you on all your jobs.

**SUPERIOR SERVICEABILITY**

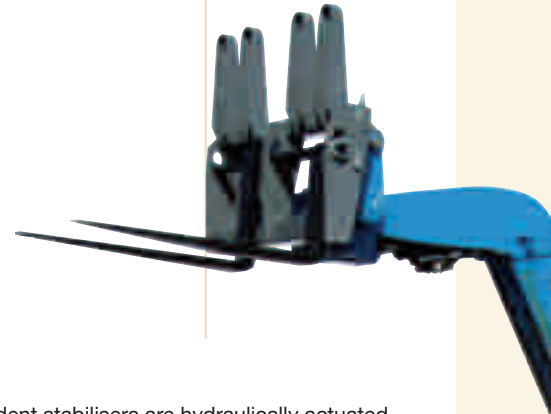


Side-mounted engine enables easy access to components. Interchangeable, common components plus easy no-tool access service and test points make these products a service manager's dream.

# ROUGH TERRAIN RELIABLE PRODUCTIVITY

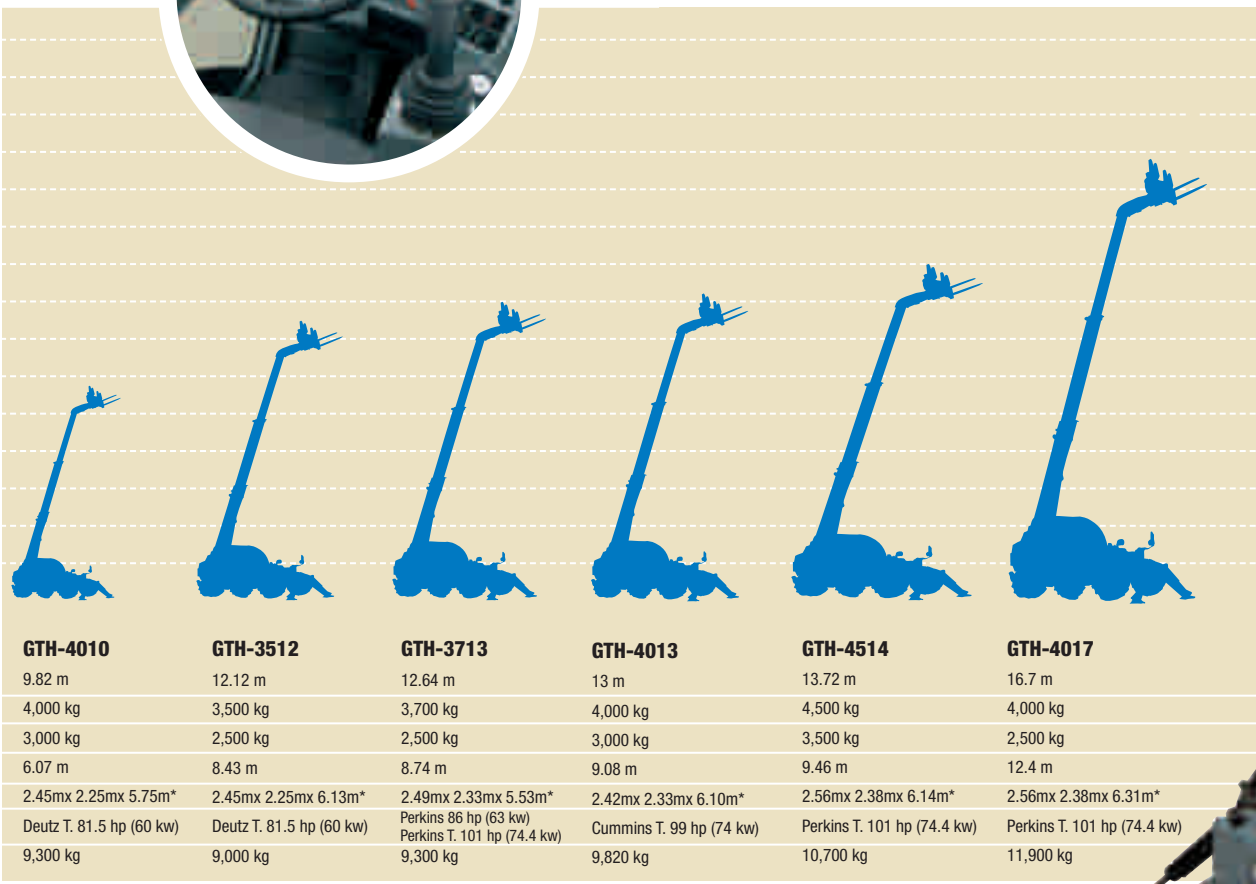
## First On and Last to Leave

Perfect heavy-duty choice for loading, unloading, moving and placing loads or materials throughout any work site and cleaning up when the project is complete. Our high reach rough terrain telehandlers are the ultimate solution for maximising work site productivity through efficient movement of material. All-round, cost-effective, reliable machines with multiple attachments available for increased ROI on any work site.



## Stability

Two front independent stabilisers are hydraulically actuated. Models equipped with chassis leveling on the front axle (+/- 6° for GTH-4013 and +/- 8° for other models) offer the operator maximum stability with simplicity as the axle leveling can be adjusted at the push of a switch.



\*Length at fork-holder plate



### Optimum working conditions

These models feature a rounded cab profile that conforms to ISO3471 (ROPS) and ISO3449 (FOPS). The innovative interior is ergonomically designed. The cab is light, spacious and comfortable and offers excellent visibility. All the commands are easy to access and displayed logically for optimum usage.

### Easy to operate controls

With the multi-function joystick positioned in continuation of the armrest, the controls are easy to operate. The joystick enables fast and precise positioning.



### Simple and easy positioning

Positioning and manoeuvring Genie telehandlers is easy:

- The closed loop hydrostatic transmission enables the continuous and accurate check of the speed. It allows precise positioning.
- The two-speed mechanical gear box is powerful and ideal for towing. It enables the machines to combine a high climbing capacity with a fast travel speed.
- The differential lock of the axle increases wheel traction for maximum efficiency on muddy or uneven terrain.
- The hydraulic circuit is equipped with a variable displacement pump with load sensing controls for maximum efficiency.
- High ground clearance (up to 46 cm depending on models) enables work on rough ground.
- Fast extension speed of the boom (15 to 26 sec. according to models).

### Quick coupling

The quick coupling of tools from the cab available on most models enables a fast change of attachments for maximum productivity.



## SIMPLIFIED MAINTENANCE



Engines are side-mounted for easy access to components. The parts and hydraulic components are common on most models. Daily service checks are quickly accomplished with accessible service points for increased up time.

# VERSATILE ROTATING MODELS

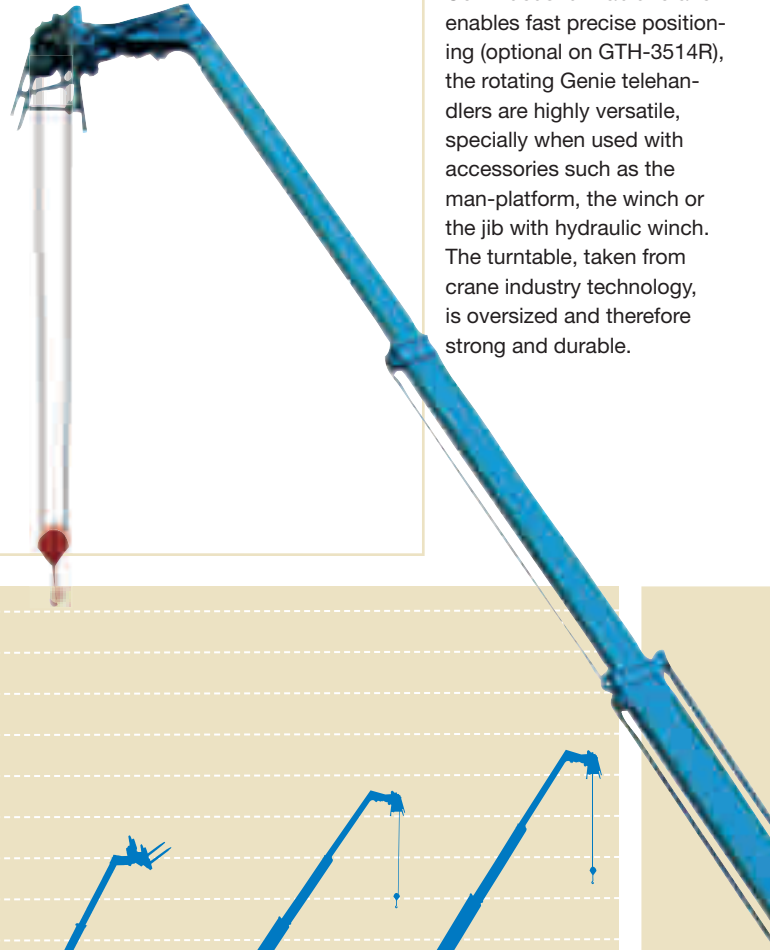
## Heavy-Duty Favourite

These models are able to lift substantial loads even without deploying the stabilisers. The heavy duty chassis allows high loading capacity and great stability. The high thickness plate ensures less twisting and deflection, resulting in longer machine life.

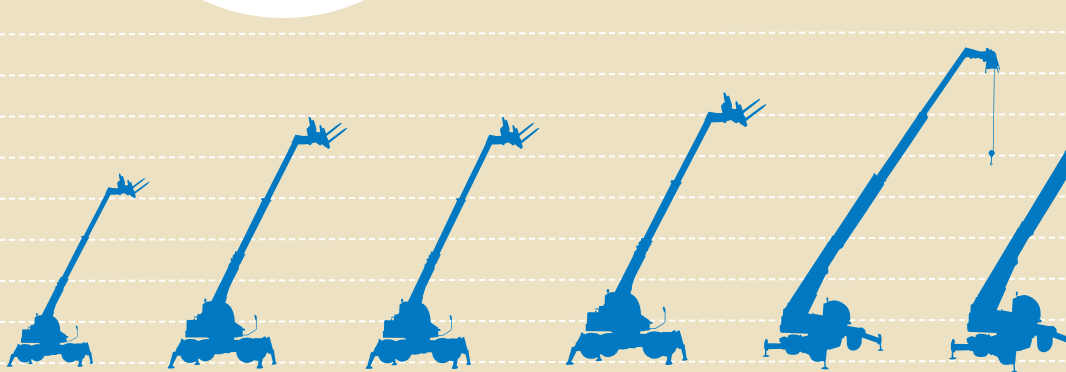


## Versatility

Continuous turntable rotation enables fast precise positioning (optional on GTH-3514R), the rotating Genie telehandlers are highly versatile, specially when used with accessories such as the man-platform, the winch or the jib with hydraulic winch. The turntable, taken from crane industry technology, is oversized and therefore strong and durable.



24.0 m  
21.0 m  
18.0 m  
15.0 m  
12.0 m  
9.0 m  
6.0 m  
3.0 m



	<b>GTH-3514 R</b>	<b>GTH-3518 R</b>	<b>GTH-4518 R</b>	<b>GTH-4020 R</b>	<b>GTH-5022 R</b>	<b>GTH-6025 R**</b>
LIFTING HEIGHT MAX.	13.55 m	17.55 m	17.25 m	19.64 m	21.80 m	24.8 m
LIFTING CAPACITY MAX.	3,500 kg	3,500 kg	4,500 kg	4,000 kg	5,000 kg	6,000 kg
CAPACITY AT MAX. HEIGHT	2,500 kg	2,200 kg	3,000 kg	2,500 kg	2,500 kg	2,000 kg
FORWARD REACH MAX.	11.29 m	15.18 m	14.90 m	17.50 m	18.90 m	21.5 m
DIMENSIONS (HxWxL)	2.93mx 2.40mx 5.79m*	2.93mx 2.40mx 6.58m*	2.93mx 2.48mx 6.78m*	2.93mx 2.48mx 7.43m*	3.05mx 2.49mx 7.55m*	3.15mx 2.47mx 8.15m
ENGINE	Perkins T. 101 hp (74.4 kw)	Perkins T. 101 hp (74.4 kw)	Deutz T. 102 hp (74.9 kw)	Deutz T. 102 hp (74.9 kw)	Perkins T. 152 hp (113.5 kw)	Cummins T. 166 hp (119 kw)
WEIGHT	11,700 kg	12,900 kg	14,800 kg	15,200 kg	18,000 kg	20,500 kg

\*Length at fork-holder plate

\*\*Preliminary specification



## HIGH REACH ROUGH TERRAIN ROTATING TELEHANDLERS

### CONTROLS

- Dashboard equipped with easy-to-read instruments.
- Joysticks in continuity of the arm rests for ease of use. Multi-function joystick for the boom movements: lifting/lowering, extension/retraction, tilting of fork-holder plate and accessories. Optional joystick on the left side to rotate the turntable and for control of the jib.
- Hydraulic locking of the fork-holder plate for quick coupling of tool from the cab.
- Rotation of the turntable
- Four independent hydraulic stabilisers.



### Powerful engines

The rotating models are equipped with Perkins turbo-diesel low emission engines from 101 hp (74.4 kW) to 152 hp (113.5 kW). The GTH-4518R and the GTH-4020R are equipped with four-cylinder, 102 hp (74.9 kW) Deutz turbo-diesel engine fitted on the rotating turret. The GTH-6025R is fitted with a 166 hp (119 kW) Cummins turbo engine. Access for maintenance is easy. Conform to low emissions to UE 97/68 directive.

### COMFORTABLE CAB

- Suspended adjustable seat with armrests. It automatically adjusts according to the weight of the operator.
- Adjustable steering wheel.
- Adjustable heater and air vents. Pre-arranged for air conditioning.
- Pre-arranged for radio and CD.
- Rear window opening.
- Full road lights.

### HIGH PERFORMANCE

- High ground clearance to work on uneven terrain.
- Hydraulic circuit equipped with a variable displacement pump with load sensing controls.
- Hydrostatic transmission with closed circuit for continuous speed regulation.

### ALL GENIE TELEHANDLERS ARE EQUIPPED WITH



- Control enable switch.
- Longitudinal stability control system with: visual display with coloured LEDs, audible alarm, automatic lockout of boom extension and lowering.
- Lock-out of stabilisers and chassis leveling with boom raised.



# ACCESSORIES & OPTIONS



**MULTI-FUNCTION JOYSTICK**



**FOUR-WHEEL DRIVE  
FOUR-WHEEL STEER**



**QUICK COUPLING OF TOOLS  
FROM CAB**



**FOUR STABILISERS ON  
ROTATING MODELS**



**FRONT STABILISERS**

GTH-2506  
GTH-3007  
GTH-4010  
GTH-3512  
GTH-3713  
GTH-4013  
GTH-4514  
GTH-4017  
GTH-3514 R  
GTH-3518 R  
GTH-4518 R  
GTH-4020 R  
GTH-5022 R  
GTH-6025 R

Equipment														
Adjustable pneumatic seat	S	S	S	S	S	S	S	S	S	S	S	S	S	S
Adjustable steering wheel	S	S	S	S	S	S	S	S	S	S	S	S	S	S
Heating/ventilation	S	S	S	S	S	S	S	S	S	S	S	S	S	S
Door with window that opens fully	S	S	S	S	S	S	S	S	S	S	S	S	S	S
Roof protection grid	S	S	S	S	S	S	S	S	S	S	S	S	S	S
Proportional joystick	S	S	S	S	S	S	S	S	S	S	S	S	S	S
Four-wheel drive & four wheel steer	S	S	S	S	S	S	S	S	S	S	S	S	S	S
Hydrostatic transmission	S	S	S	S	S	S	S	S	S	S	S	S	S	S
Two-speed mechanical gearbox	-	-	S	-	S	S	S	S	S	S	S	S	S	S
Differential locking on front axle	S	S	S	S	S	S	S	S	S	S	S	S	S	S
Fork-holder plate	S	S	S	S	S	S	S	S	S	S	S	S	S	S
Hydraulic line	S	S	O	O	O	O	S	S	S	S	S	S	S	S
Hydraulic lock	S	S	O	O	O	O	S	S	S	S	S	S	S	S
Stabilisers	-	-	S	S	S	S	S	S	S	S	S	S	S	S
Chassis leveling (+/- 8°)	-	-	-	-	O*	-	S*	S*	-	-	-	-	S**	S**
Chassis leveling (+/- 6°)	-	-	-	-	-	S*	-	-	S*	S*	S*	S*	-	-
Continuous turntable rotation	N/A	N/A	N/A	N/A	N/A	N/A	N/A	N/A	O	S	S	S	S	S
Man platform pre-arrangement	-	-	-	-	-	O	O	O	O	S	S	S	S	S

\* on the front axle

\*\* on both axles

O = Option / S = Standard / - = Not available / N/A = Not applicable



**ADJUSTABLE PNEUMATIC SEAT  
WITH ARMRESTS**



**CAB WINDOWS FOLD BACK**



**WINDSHIELD PROTECTION  
GRID**



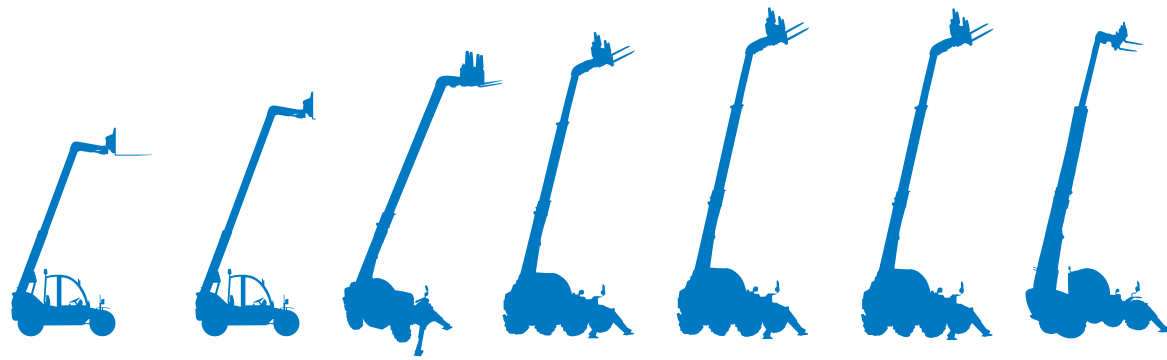
**ADJUSTABLE SPOTLIGHT**



**ROOF PROTECTION GRID**

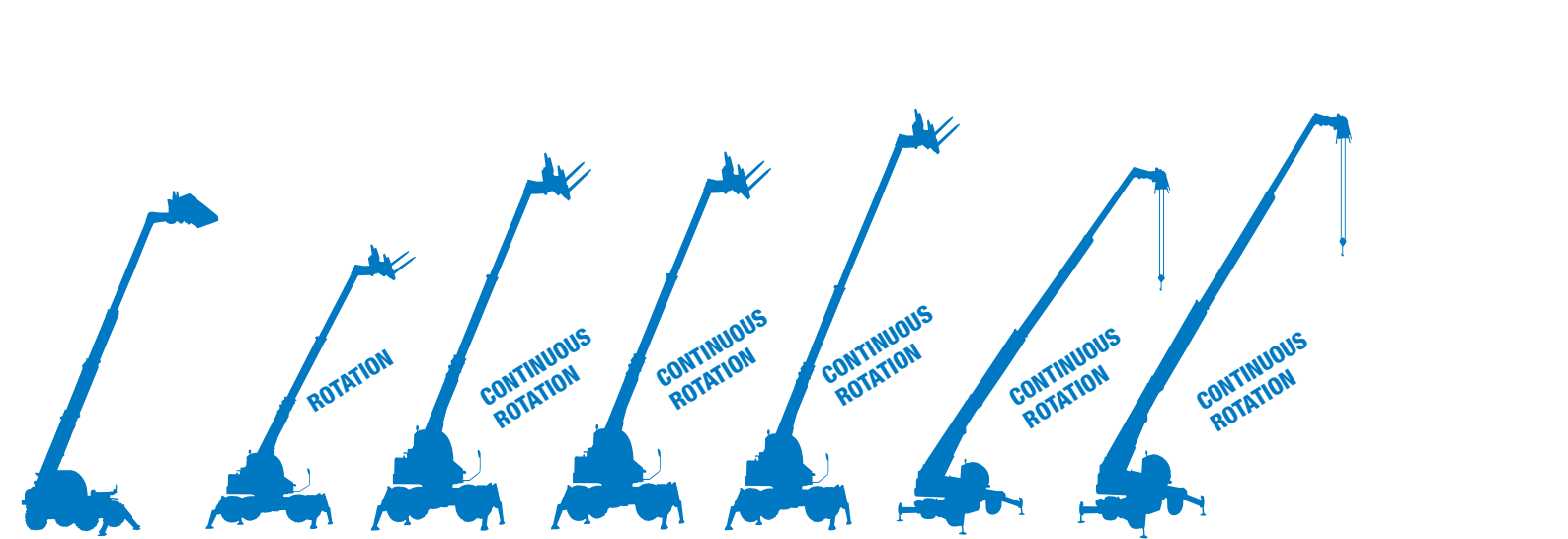


**ADDITIONAL  
LEFT HAND-SIDE  
JOYSTICK**



SPECIFICATIONS	GTH-2506	GTH-3007	GTH-4010	GTH-3512	GTH-3713	GTH-4013	GTH-4514
Lifting height (max.)	5.75 m	6.85 m	9.82 m	12.12 m	12.64 m	13 m	13.72 m
Lifting capacity (max.)	2,500 kg	3,000 kg	4,000 kg	3,500 kg	3,700 kg	4,000 kg	4,500 kg
Lift capacity at max. height	1,250 kg	2,500 kg	3,000 kg	2,500 kg	2,500 kg	3,000 kg	3,500 kg
Lift capacity at max. reach	800kg	1,250 kg	2,500 kg	1,000 kg	700 kg	1,250 kg	1,250 kg
Forward reach (max.)	3.34 m	3.80 m	6.07 m	8.43 m	8.74 m	9.08 m	9.46 m
Reach at max. height	45 cm	70 cm	85 cm	1.17 m	70 cm	0.65 m	90 cm
Weight	4,450 kg	6,000 kg	9,300 kg	9,000 kg	9,300 kg	9,820 kg	10,700 kg
Lifting/lowering speed	7 sec./4 sec.	9 sec./7 sec.	13 sec./8sec.	13 sec./8 sec.	16 sec./8 sec..	–	16 sec./12 sec.
Extension/retraction speed	7 sec./4 sec.	11 sec./7 sec.	20 sec./24 sec.	20 sec./24 sec.	19 sec./17 sec.	–	24 sec./17 sec..
Inside/outside turning radius	1.68 mx3.34 m	2.20 mx 4.05 m	2.42 mx 4.5 m	2.42 mx 4.5 m	1.30 mx 3.99 m	1.14 mx 3.79 m	1.30 mx 3.99 m
Break-out force (with 500 L shovel SAE J 732/80) **(with 800 L shovel SAE J 732/80)	3,500 kg	3,762 kg	4,500 kg	4,500 kg	7,260 kg	5,000 kg**	7,400 kg
Towing capacity at dynamometer	4,650 kg	6,500 kg	8,200 kg	8,200 kg	4,050 kg	8,300 kg	7,490 kg
Obstruction/departure angle	90°/70°	90°/42°	37°/39°	37°/39°	39°/45°	38°/46°	39°/27°
Ground clearance	36 cm	41 cm	43 cm	43 cm	46 cm	43 cm	46 cm
Diesel engine	Deutz 63 hp/47 kW	Deutz Turbo 81.5 hp/60 kW	Deutz Turbo 81.5 hp/60 kW	Deutz Turbo 81.5 hp/60 kW	Perkins 86 hp/63 kW Perkins Turbo 101 hp/74.4kW	Cummins Turbo 99 hp/74 kW	Perkins Turbo 101 hp/74.4 kW
Speed (max.)	24 km/h	35 km/h	30 km/h	30 km/h	30 km/h	35 km/h	35 km/h
Hydraulic output/pressure	67 L/min-250 bars	80 L/min-280 bars	80 L/min-280 bars	80 L/min-280 bars	140 L/min-270 bars	95 L/min-270 bars	140 L/min-250 bars
Fuel tank capacity	60 L	92 L	92 L	92 L	135 L	150 L	135 L
Engine oil tank capacity	8 L	8 L	8 L	8 L	11.5 L	12 L	11.5 L
Hydraulic oil tank capacity	70 L	90 L	90 L	90 L	150 L	135 L	150 L
Fork-holder plate rotation	135°	135°	145°	145°	145°	138°	145°
Floating forks	L 1200 mm/ sect° 100x40 mm	L 1200 mm/ sect° 120x45 mm	L 1200 mm/ sect° 120x50 mm	L 1200 mm/ sect° 120x45 mm	L 1200 mm/ sect° 120x45 mm	L 1200 mm/ sect° 120x50 mm	L 1200 mm/ sect° 120x50 mm
Tyres (DIN 70361)	12-16.5" PR10	405/70-20" PR14	405/70-20" PR14	405/70-20" PR14	405/70-20" PR16	405/70-20" PR14	405/70 -20" PR14
Dimensions (HxWxL)	1.92 mx1.80 mx3.72m*	2.05mx2mx4.69m*	2.45mx2.25mx5.75m*	2.45mx2.25mx6.13m*	2.49mx2.33mx5.53m*	2425mx2.33mx6.10m*	2.56mx2.38mx6.14m*
Inside cab width	86 cm	86 cm	86 cm	86 cm	91 cm	91 cm	91 m

\*Length at fork-holder plate



GTH-4017	GTH-3514 R	GTH-3518 R	GTH-4518 R	GTH-4020 R	GTH-5022 R	GTH-6025 R**	SPECIFICATIONS
16.7 m	13.55 m	17.55 m	17.25 m	19.64 m	21.80 m	24.8 m	Lifting height (max.)
4,000 kg	3,500 kg	3,500 kg	4,500 kg	4,000 kg	5,000 kg	6,000 kg	Lifting capacity (max.)
2,500 kg	2,500 kg	2,200 kg	3,000 kg	2,500 kg	2,500 kg	2,000 kg	Lift capacity at max. height
700 kg	700 kg	300 kg	750 kg	250 kg	400 kg	250 kg	Lift capacity at max. reach
12.4 m	11.29 m	15.18 m	14.90 m	17.50 m	18.90 m	21.5 m	Forward reach (max.)
1.28 m	2.9 m	3.80 m	3.60 m	4.20 m	4.10 m	4.25 m	Reach at max. height
11,900 kg	11,700 kg	12,900 kg	14,800 kg	15,200 kg	18,000 kg	20,500 kg	Weight
16 sec./13 sec.	15 sec./10 sec.	15 sec/12 sec	15 sec./11 sec.	15 sec./11 sec.	30 sec./20 sec.	–	Lifting/lowering speed
26 sec./15 sec.	17 sec./27 sec.	24 sec/15 sec	25 sec./15 sec.	29 sec./17 sec,	43 sec./27 sec.	–	Extension/retraction speed
1.30 mx 3.99 m	2.34 mx 4 m	2.34 mx 4 m	1.14 mx 4 m	1.14 mx 4 m	2.52 mx 4.84 m	2.85/4.84 m	Inside/outside turning radius
7,400 kg	7,400 kg**	7,400 kg	7,400 kg**	7,400 kg**	8,400 kg	8,400 kg	Break-out force (with 500 L shovel SAE J 732/80) **(with 800 L shovel SAE J 732/80)
7,490 kg	7,000 kg	7,000 kg	8,000 kg	8,000 kg	10,900 kg	11,500 kg	Towing capacity at dynamometer
39°/27°	23°/23°	23°/23°	20°/20°	20°/20°	17°/17°	22°/22°	Obstruction/departure angle
46 cm	37 cm	37 cm	37 cm	37 cm	43 cm	54 cm	Ground clearance
Perkins Turbo 101 hp/74.4 kW	Perkins Turbo 101 hp/74.4 kW	Perkins Turbo 101 hp/74.4 kW	Deutz Turbo 102 hp/74.9 kW	Deutz Turbo 102 hp/74.9 kW	Perkins Turbo 152 hp/113.5 kW	Cummins Turbo 166 hp/119 kW	Diesel engine
35 km/h	30 km/h	34 km/h	30 km/h	30 km/h	30 km/h	30 km/h	Speed (max.)
140 L/min-250 bars	130 L/min-250 bars	130 L/min-250 bars	100 L/min-270 bars	100 L/min-270 bars	130 L/min-250 bars	135 L/min- 270 bars	Hydraulic output/pressure
135 L	125 L	125 L	145 L	145 L	125 L	125 L	Fuel tank capacity
11.5 L	11.5 L	11.5 L	12 L	12 L	18 L	18 L	Engine oil tank capacity
150 L	200 L	200 L	230 L	230 L	200 L	–	Hydraulic oil tank capacity
145°	145°	145°	145°	145°	131°	124°	Fork-holder plate rotation
L 1200 mm/ sect° 120x50 mm	L 1200 mm/ sect° 120x45 mm	L 1200 mm/ sect° 120x45 mm	L 1200 mm/ sect° 120x50 mm	L 1200 mm/ sect° 120x50 mm	L 1200 mm/ sect° 150x50 mm	L 1200 mm/ sect° 150x50 mm	Floating forks
405/70-24" PR14	18/19.5" PR16	18/19.5" PR16	18/19.5" PR16	18/19.5" PR16	18/22.5" PR16	445/65 R 22.5 MPT	Tyres (DIN 70361)
2.56mx2.38mx6.31m*	2.93mx2.40mx5.79m*	2.93mx2.40mx6.58m*	2.93mx2.48mx6.78m*	2.93mx2.48mx7.43m*	3.05mx2.49mx7.55m*	3.15mx2.47mx8.15m	Dimensions (HxWxL)
91 cm	91 cm	91 cm	91 cm	91 cm	91 cm	93 cm	Inside cab width

\*Length at fork-holder plate \*\*Preliminary specification

**ACCESSORIES**

(A wide range of options, accessories and attachments are available - For a full list, please consult your Genie representative.)

**LOADED WITH VERSATILITY AND VALUE**

The wide range of attachment options available offers versatile use in a variety of applications. Genie telehandlers provide excellent flexibility by providing one work tool for a variety of jobs, including cleanup, loading, carrying and dumping. Configure the machine perfectly for any construction site.

**ATTACHMENT OPTIONS**

- Loading shovel
  - 500 L or 800 L loading shovel
  - 1200 L cereal loading shovel
  - 2000 L loading shovel
- Mixing bucket
  - 250/500 L with or without remote control
- Concrete bucket
  - 250 L with remote control
  - 500 L or 800 L, hydraulic discharge
  - 500 L or 800 L, manual discharge
- Concrete mixing bucket
  - 500 L with remote control
- Brick-holder basket
- Fixed hook on plate
- FEM2 or FEM3 plate and forks kit
- Forks side-shift
- Jib
  - 2 m length/400 kg capacity
  - 4 m length/900 kg capacity
  - 4 m length/900 kg capacity hydraulic winch
- Hydraulic winch
  - 3,000 kg capacity
  - 5,000 kg capacity
- Robot 8000 or 15000
  - 8 m or 15 m telescopic boom can be used for work below horizontal
- Fixed man-platform
  - 2 persons/200 kg, 800 mm x 2200 mm
  - 2 persons/300 kg, 910 mm x 2190 mm
- Rotating non-extendable man-platform
  - 2 persons/200 kg. +/- 90° rotation. 1200 x 2200 mm
  - 2 persons/300 kg. +/- 90° rotation. 1315 x 2390 mm
  - 3 persons/1000 kg. +/- 90° rotation. 1000 x 2000 mm
- Rotating and extendable man-platform
  - 2 persons/200 kg. +/- 90° rotation. 1200 x 2320 mm, extends up to 4460 mm
  - 2 persons/500 kg. +/- 90° rotation. 1170 x 2540 mm, extends up to 4640 mm
  - 2 persons/800 kg. +/- 45° rotation. 1100 x 3500 mm, extends up to 5500 mm

**CAB OPTIONS**

- Quick coupling of attachments from cab
- Windshield protection grid
- Wiper on cab roof
- Air conditioning
- Additional armrest
- Adjustable spotlight
- 2<sup>nd</sup> joystick on left hand
- Special air filter

**BOOM & CHASSIS OPTIONS**

- Hydraulic chassis levelling
- Hydraulic line on boom
- 2<sup>nd</sup> hydraulic line on boom
- Electric pre-arrangement on boom
- Continuous rotation

**ACCESSORIES**

- Spare wheel, including foam-filled spare wheel
- Tyres
- Complete radio remote control with one joystick

Availability of accessories and options varies depending on model and/or country standards.



LOADING SHOVEL



BRICK-HOLDER BASKET



MIXING BUCKET



HYDRAULIC WINCH



CONCRETE BUCKET



FIXED MAN-PLATFORM



FIXED HOOK PLATE



NON-EXTENDABLE ROTATING MAN-PLATFORM



JIB WITH HYDRAULIC WINCH



EXTENDABLE ROTATING MAN-PLATFORM

**SAFETY**

- Longitudinal stability control system with: visual display with coloured LEDs, audible alarm, automatic lockout of boom extension and lowering.
- Lock-out of stabilizers and chassis leveling with boom raised.
- The range of motion corresponding to the attachment installed can be easily selected. All functions of the attachment are controlled by touch pad (depending on model).
- Control enable switch.

**STANDARD COMPLIANCE**

- Operating cab conforms to ISO3471 (ROPS) and ISO 3449 (FOPS)
- Low emission engines conform to UE 97/68 directives.

# ROUGH TERRAIN TELEHANDLERS

## MODELS

### Compact Rough Terrain Telehandlers

- GTH-2506  
(exists in agricultural version)
- GTH-3007  
(exists in agricultural version)

### High Reach Rough Terrain Telehandlers

- GTH-4010
- GTH-3512
- GTH-3713
- GTH-4013
- GTH-4514
- GTH-4017

### High Reach Rotating Rough Terrain Telehandlers

- GTH-3514 R
- GTH-3518 R
- GTH-4518 R
- GTH-4020 R
- GTH-5022 R
- GTH-6025 R



**Genie**  
A TEREX COMPANY

## European Offices

### United Kingdom

The Maltings  
Wharf Road  
Grantham NG31 6BH  
U.K.  
Tel **+44 (0)1476 584333**  
Fax +44 (0)1476 584334

### France

10, ZA de la Croix St.  
Mathieu  
28320 Gallardon  
France  
Tel **+33 (0)2 37 26 09 99**  
Fax +33 (0)2 37 26 09 98

### Germany

Finienweg 3  
28832 Achim/Bremen  
Germany  
Tel **+49 (0)4202 88520**  
Fax +49 (0)4202 885225

### Spain

Gaià, 31-Pol. Ind. Plà  
d'en Coll  
08110 Montcada i Reixac  
Barcelona  
Spain  
Tel **+34 93 572 50 90**  
Fax +34 93 572 50 91

### Scandinavia

Tagenevägen 72  
425 37 Hisings Kärra  
Sweden  
Tel **+46 31 57 51 00**  
Fax +46 31 57 90 20

### Genie United States

18340 NE 76th Street  
P.O. Box 97030  
Redmond, Washington 98073-9730  
Tel **+1 (425) 881 1800**  
Fax +1 (425) 883 3475

WEB [www.genieindustries.com](http://www.genieindustries.com)  
Email [infoeurope@genieind.com](mailto:infoeurope@genieind.com)

**Distributed By:**

For further information, please contact your local distributor or the Genie Industries sales office listed. Product specifications are subject to change without notice or obligation. The photographs and drawings in this brochure are for illustrative purposes only. Refer to the appropriate Operator's Manual for instructions on the proper use of this equipment. Failure to follow the appropriate Operator's Manual when using our equipment or to otherwise act irresponsibly may result in serious injury or death. Prices and specifications subject to change without notice. The only warranty applicable is the standard written warranty applicable to the particular product and sale. Genie makes no other warranty, expressed or implied. Products and services listed may be trademarks, service marks or trade-names of TEREX Corporation and/or its subsidiaries in the USA and other countries and all rights are reserved. Copyright © 2005 Genie Industries, Inc. "Genie" is a Registered Trademark of Genie Industries, Inc. in the USA and many other countries. Genie is a TEREX Company.